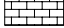


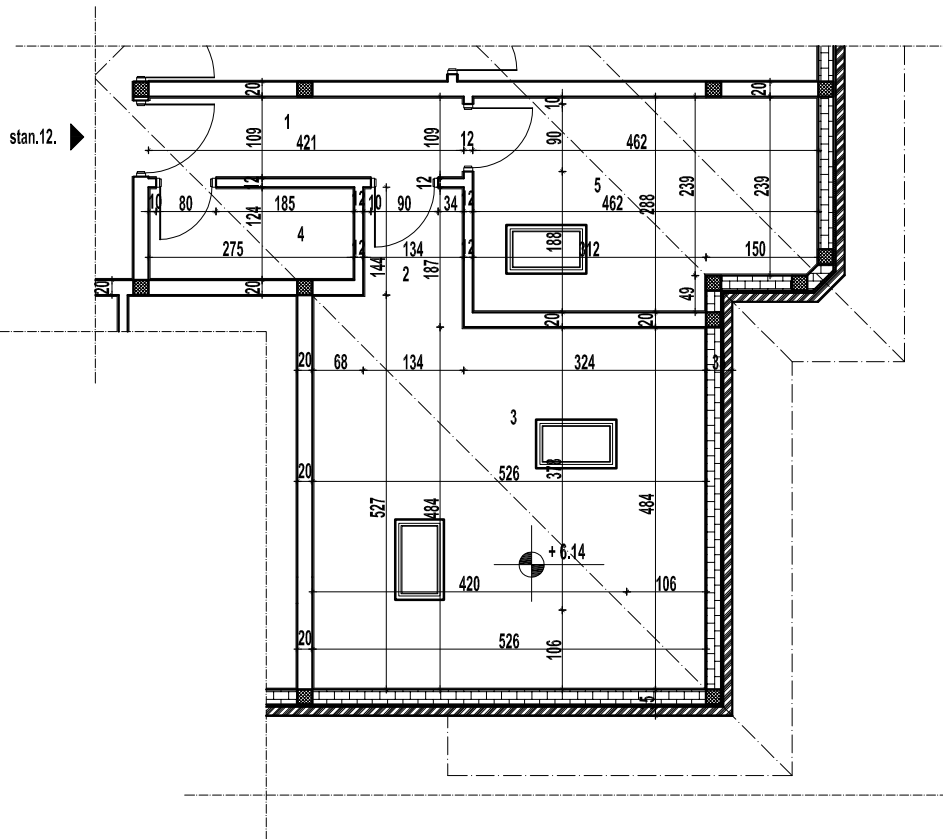
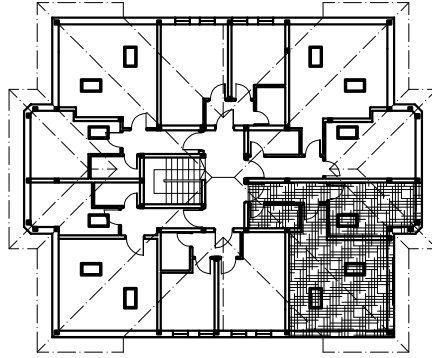


ARHITEKT PRO

POTKROVLJE

-  zid od giter blokova d=20cm
-  stiropor d=3cm
-  zid od pune opeke d=12cm



Stan br.12.

OBRACUN POVRŠINA				
ozn.	namena	P(m2)	pod	O.
1	hodnik	4.38	parket	1044.00
2	degazman	1.87	parket	548.00
3	dnevna s.	25.91	parket	2090.00
4	kupatilo	3.25	keramicke pl.	782.00
5	spavaca s	12.26	parket	1475.90
		47.67		

ARHITEKT PRO