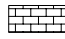


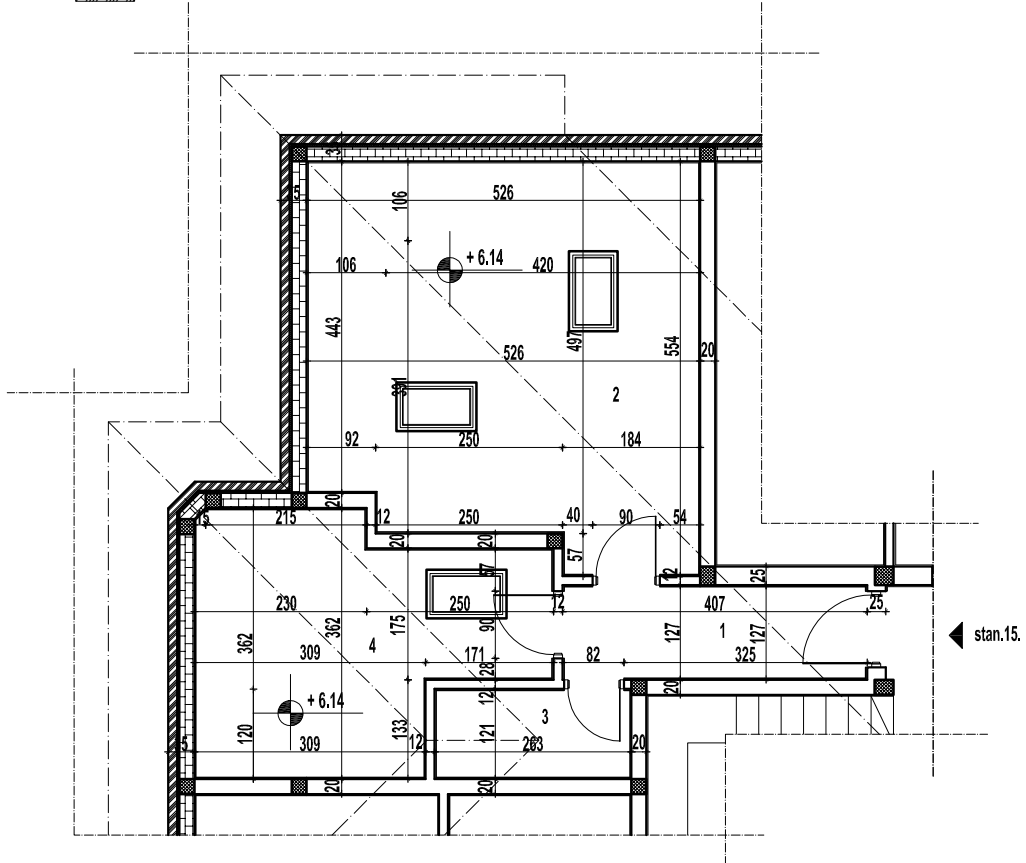
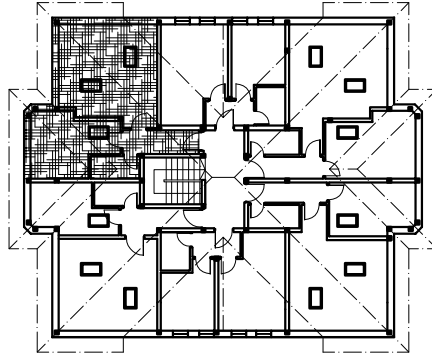


ARHITEKT PRO

POTKROVLJE

-  zid od giter blokova d=20cm
-  stiropor d=3cm
-  zid od pune opeke d=12cm



Stan br.15.

OBRAČUN POVRŠINA				
ozn.	namena	P(m2)	pod	O.
1	hodnik	4.94	parket	1050.90
2	dnevna s.	26.26	parket	2144.00
3	kupatilo	3.02	keramicke pl.	751.00
4	spavaca s.	13.42	parket	1659.90
		47.64		

ARHITEKT PRO