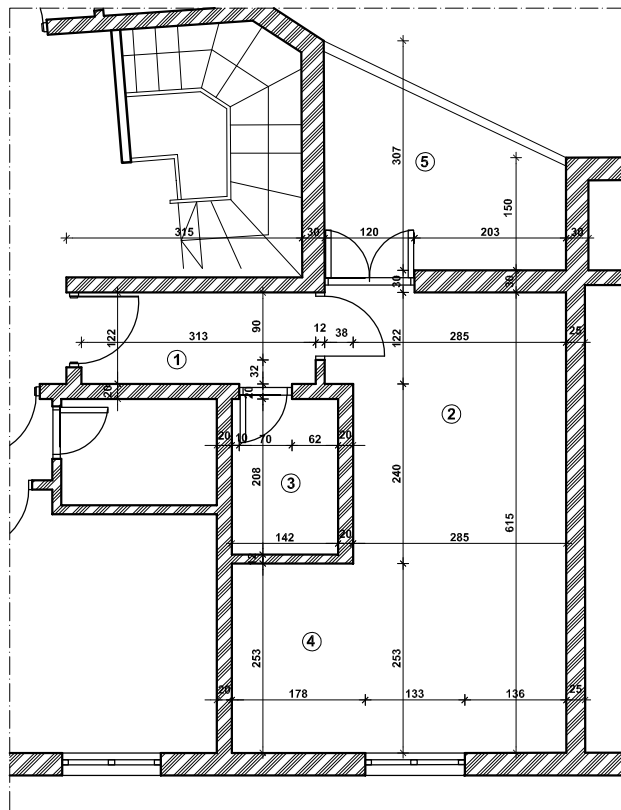


stan br.11A. ▶



OBRACUN POVRSINA					
ozn.	namena	P(m2)	k	kor. P(m2)	O.
1	hodnik	3.82		3.82	870.21
2	dnevna soba	17.98		17.98	1875.58
3	kupatilo	2.95		2.95	700.00
4	kuhinja	4.10		4.10	829.95
5	terasa	7.38		7.38	1139.00
		36.23		36.23	

Povrsina stana br.11A. P=36.23m2