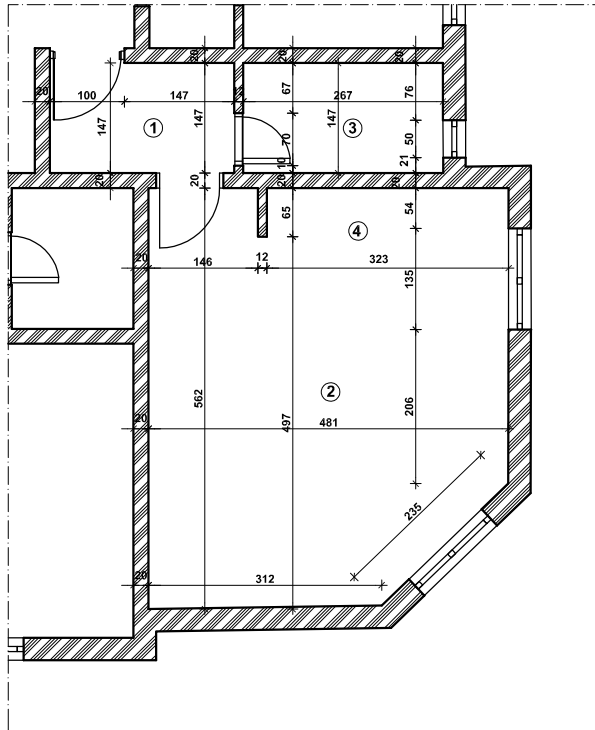


stan br.9B.



OBRACUN POVRŠINA					
ozn.	namena	P(m2)	k	kor. P(m2)	O.
1	hodnik	3.62		3.62	786.98
2	dnevna soba	20.59		20.59	1984.70
3	kupatilo	3.92		3.92	827.70
4	kuhinja	4.85		4.85	946.34
		32.98		32.98	

Površina stana br.9B. P=32.98m2